



# Vieira Lab Newsletter

December 14, 2012  
Volume 7, Issue 5

## Lab Meeting

**Wednesday, January 9th**

Room 371 at 12pm

## Recent Publications

Molecular factors resulting in tooth agenesis and contemporary approaches for regeneration: A review. Cudney SM, Vieira AR. Eur Arch Paediatr Dent. 2012 Dec;13(6):297-304.

## Student Rotations

3rd-Year dental students are participating in an inter-professional experience as part of their rotations. Students shadow doctors at the UPMC Digestive Disease Center and offer dental evaluations to patients at the DDC. Studies have suggested that periodontal disease is connected to various systemic diseases, such as irritable bowel disease. This rotation aims to give the students experience to working with physicians and nurses in a hospital setting.

### Recruitment Summary

**Affected by IBD** 18  
**Not Affected by IBD** 17

## Lab News

Evidence exists suggesting individuals born with craniofacial defects, such as cleft lip and palate or tooth agenesis, may have a higher risk for several types of cancer, as well as their family members. The Vieira Lab has concentrated on this issue and has generated information that suggests that if you are a relative of someone born with cleft lip and palate, you may have 3 times higher the risk of having cancer in comparison to the general population. Our current hypothesis is that the same genetic contributors that are involved in craniofacial and dental development also control cell proliferation and differentiation later in life and alterations in these genes or their pathways may lead to both conditions. You can read more about our data by requesting our papers below:

Küchler EC, Lips A, Tannure PN, Ho B, Costa MC, Granjeiro JM, Vieira AR. Tooth agenesis association with self-reported family history of cancer. J Dent Res [Epub ahead of print]

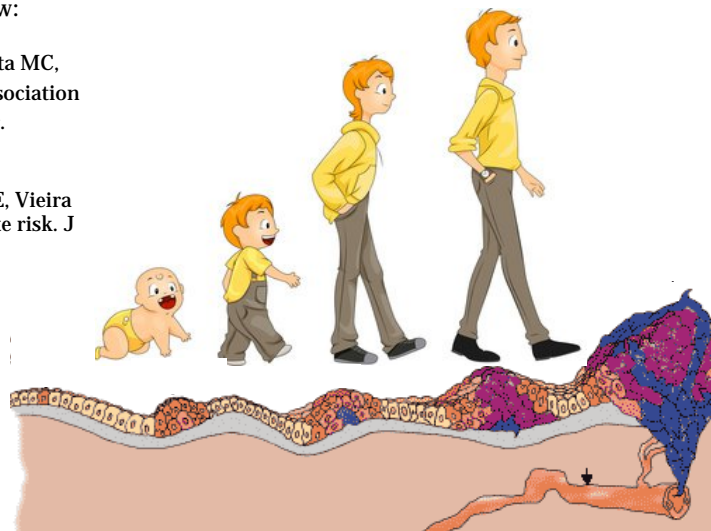
Yildirim M, Seymen F, Deeley K, Cooper ME, Vieira AR. Defining predictors of cleft lip and palate risk. J Dent Res 2012; 91:556-561.

Vieira AR, Lace B, Khaliq S. Risk of cancer in relatives of children born with isolated cleft lip and palate. Am J Med Genet Part A 2012; 158:1503-1504.

Jindal A, Vieira AR. Family history of cleft lip and palate in subjects diagnosed with leukemia. Am J Med Genet Part A 2012; 158:678-679. Andrade Filho PA, Letra A, Cramer A, Prasad JL, Garlet GP, Vieira AR, Ferris RL, Menezes R. Insights from studies with oral clefts suggest associations between WNT-pathway genes and risk of oral cancer. J Dent Res 2011; 90:740-746.

Taioli E, Ragin C, Robertson L, Linkov F, Thurman NE, Vieira AR. Cleft lip and palate in family members of cancer survivors. Cancer Invest 2010; 28: 958-962.

Menezes R, Marazita ML, McHenry TG, Cooper ME, Bardi K, Brandon C, Letra A, Martin RA, Vieira AR. AXIN2, orofacial clefts and positive family history for cancer. J Am Dent Assoc 2009; 140: 80-84.



## DRDR Update

### Recruitment Summary

<b>Subjects Recruited</b>	3730
<b>Subjects Declined</b>	569
<b>Compliance Rate</b>	86%

### Recruitment Location

<b>Module 1</b>	909	<b>Emergency Care</b>	68	<b>UDHS</b>	8
<b>Module 2</b>	1229	<b>Oral Surgery</b>	43	<b>Orthodontics</b>	150
<b>Module 3</b>	463	<b>Pediatric Dentistry</b>	245	<b>Other</b>	73
<b>Module 4</b>	218	<b>Implant Center</b>	15	<b>AEGD</b>	22
<b>Dental Hygiene</b>	221	<b>Prosthodontics</b>	30	<b>Perio</b>	10
<b>Endo</b>	26				